

# Sabroe SAB 128 HF

## Specifications

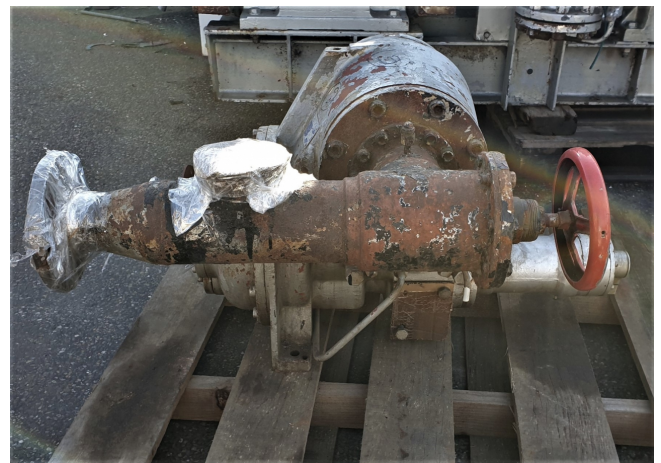
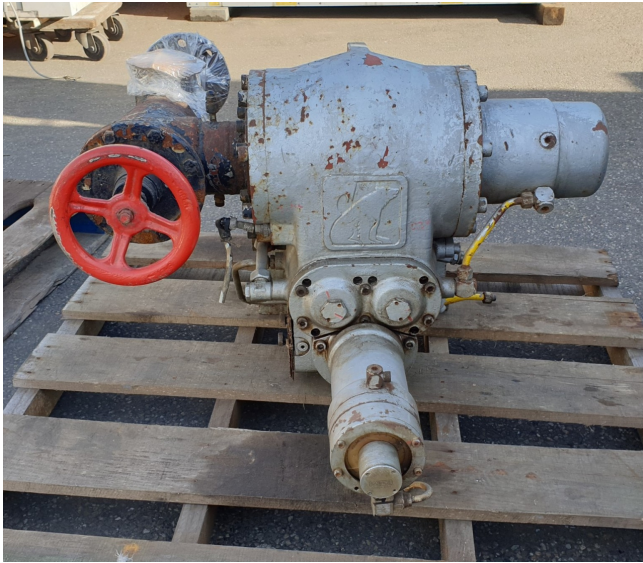
Merk	Sabroe
Type	SAB 128 HF
Koudemiddel	NH 3 / Freon
kW at 0°C/+40°C	385.2
m3 / h	454/547
Opmerkingen	Our capacity table is based on Manufacturer spec. We would like to know which refrigerant is in your system
Opmerkingen	2950/3550RPM
Opmerkingen	serial number 95010
Gewicht in kg.	1150
Afmetingen	950x800x550mm (LxWxH)
Stock	1



## Description

### Used Sabroe SAB 128 HF

Used Sabroe SAB 128 HF screw compressor. Size 950x800x550mm(LxWxH), Weight 1150kg, 454/547m3/h, 2950/3550RPM  
 \*Why choose for HOSBV? Were not only the largest used refrigeration specialist in Europe, but also, we deliver all equipment including an extensive test, warranty and industrial cleaning.  
 \*Optional we can also perform a new paint job and arrange the logistics



## Cooling capacities \* kW at 2960 rpm

Model	R717		R22		R404A		With economiser		
	High stage	Booster	High stage	High stage	High stage	High stage	R717	R22	R404A
SAB 128 HM	-10/+35 °C	-40/-10 °C	-10/+35 °C	0/+40 °C	-10/+35 °C	0/+40 °C	-40/+35 °C	-40/+35 °C	-40/+35 °C
SAB 128 HF	187.9	58.9	178.4	240.5	183.9	245.4	50.3	64.7	73.5
	294.9	92.5	280.0	379.4	288.6	385.2	78.9	101.0	113.9

\* 5 °K liquid sub-cooling / 5 °K suction superheat for R717 / 15 °C suction superheat for R404A and R22

## Technical data

Model	Swept volume <sup>(1)</sup>		Dimensions <sup>(2)</sup>			Weight <sup>(3)</sup>	Sound pressure level <sup>(4)</sup>
	2950 rpm	3550 rpm	Length	Width	Height		
SAB 128 HM	m³/h	m³/h	mm	mm	mm	kg	dB(A)
SAB 128 HF	303	364	2200	1420	1405	1150	84
	454	547	2200	1420	1405	1150	86

(1) Drive motor speed – (2) With refrigerant-cooled oil cooler – (3) Excluding electric motor – (4) Free field – one metre distance



Your partner for used commercial and  
industrial refrigeration equipment

---